

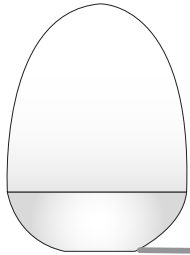
# USB GREENHOUSE USER MANUAL

## ⚠ Minimum system requirements for running the Dream Cheeky Greenhouse:

- Microsoft Windows 2000, XP
- 256 MB of system RAM
- One available USB 1.1 port
- PC with Pentium 3 or compatible processor
- 200 MB available hard disk space
- Display adapter capable of 800 x 600 in 16 bit color that operates at 1.5 GHz or faster
- CD-ROM Drive

## ⚠ Before using the product, carefully read this manual and retain it for future reference.

This packaging contains:



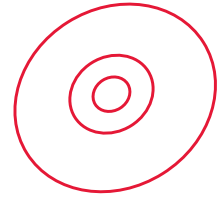
USB Greenhouse



Marigold Seeds



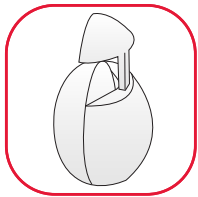
Artificial soil



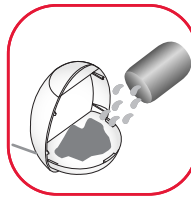
CD - Greenhouse Software

## ⚠ Before you begin:

Before you begin you need to add your seeds and soil to the Greenhouse



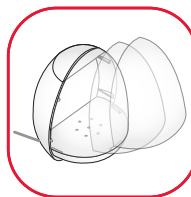
1. Pull up the light unit on top of the Greenhouse then gently pull away the clear face.



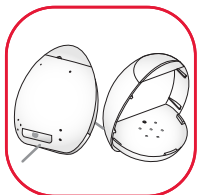
5. After your seed is properly planted you may add water to the unit until the soil is lightly moistened. (Warning, if you over water your plant will not grow)



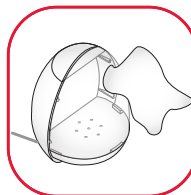
2. Be sure that the Greenhouse is not plugged into your USB port.



6. Replace the clear face onto the Greenhouse and lower the light so there is just a small gap for air. (If you do not leave a gap the plant will not have enough air to grow).



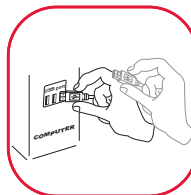
3. Make sure the inner tray is evenly positioned in the bottom of the unit and that the drip tray located on the back of the Greenhouse is securely in place.



7. Wipe any excess water, moisture and soil from the Greenhouse.



4. Add your soil into the Greenhouse tray and then follow the correct instructions on back of your seed package.



8. Plug the Greenhouse into the USB port on your computer.

## USB Connection

1. Connect the USB cable attached to the Greenhouse to a USB port located on your PC prior to playing with it.



2. Double click on the Greenhouse program on your desktop.

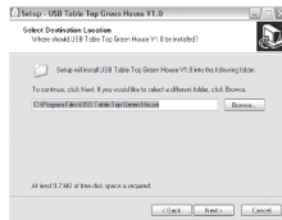
- Note:** Install the software before connecting your Greenhouse! If you have already plugged the Greenhouse into the computer, please unplug it before installing the software.
- Note:** Using a USB HUB or docking station may result in the loss of power to the Greenhouse. This could create the Unit to not work properly.

## Installing the Software

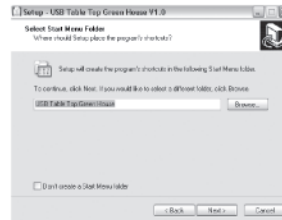
- 1 The install program will show up automatically (If not manually click on the CD drive)



- 2 On the Setup window, choose the location where the program be installed and "Click Next"



- 3 On the Setup window, choose the location where the program shortcuts be created and "Click Next"



- 4 Click the 'Install' button.



- 5 Finally tick the "Launch application" for automatically launch and click "Finish" to complete installation and launch the program.



- 6



SHORTCUT ICON

(If on a network system, this may not appear.)



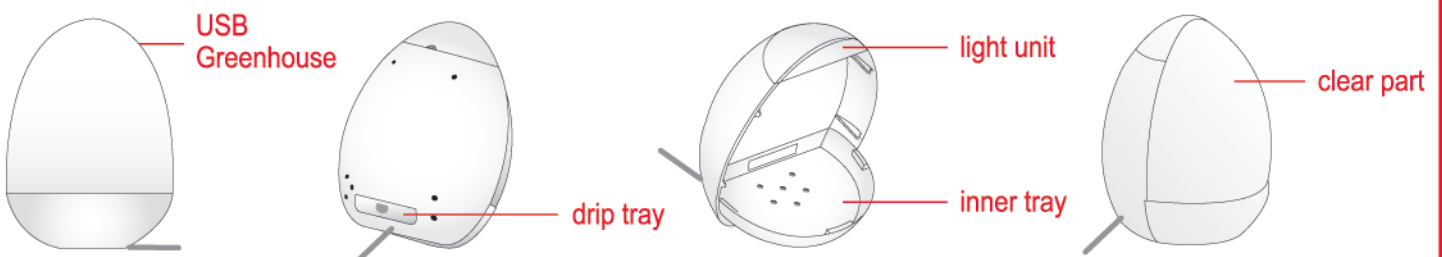
(Only appears when the program is running)

## Introduction

This demonstrates how to use the Greenhouse. Load the Greenhouse software provided and use these instructions to maximize your playing capability.

**Note:** Please be sure to plug your Greenhouse into a USB port in your PC prior to playing with the unit.

## Switch & Play

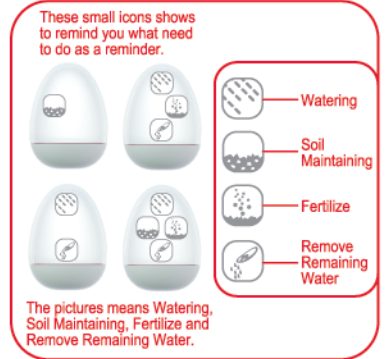


## ▶ Motion Controls:

Connect the USB cable attached to the Greenhouse to a USB port located on your PC prior to playing with it.



- Left click the mouse to access the Wallpaper setting
- Left click the mouse to access the Bookmark setting
- Left click the mouse to access the Growth Chart setting
- Left click the mouse to access the Calendar setting
- Left click the mouse on left or right button to access different months
- Double Left click the mouse on date / single click on date then click "OK" button to access the Date setting
- Left click the mouse for "CANCEL"
- Left click the mouse for "OK"



## ▶ Interface

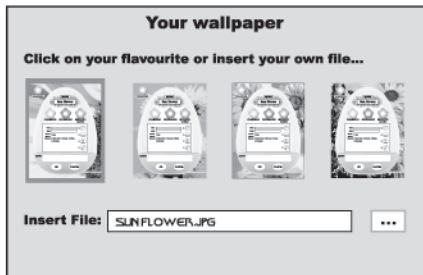
Double click on the Desktop Greenhouse icon to launch the program. The main interface will appear. Welcome to the world of your very own Desktop Greenhouse, within this program you will find everything you will need to care for and grow your desk top plants.

The main interface has a number buttons with various functions.

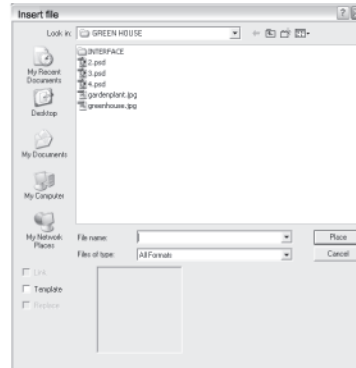


WALLPAPER

- 1. Wallpaper** - this allows you to personalize the background of the interface! Clicking on the button calls up a folder.



We have loaded a choice of 4 backgrounds from which you can select by simple double clicking.

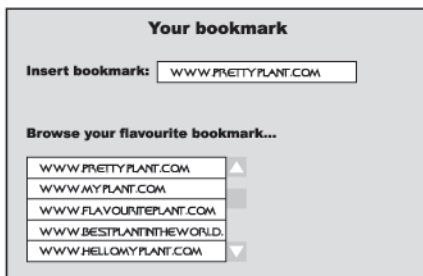


However for more choice there is an insert bar, through which, you can search and browse your own computer to select and insert your own wallpaper.



BOOKMARK

- 2. Bookmark** - this allows you to store up to 20 bookmarks of your favorite pages that you can call up quickly and easily. Clicking on the button calls up a folder.

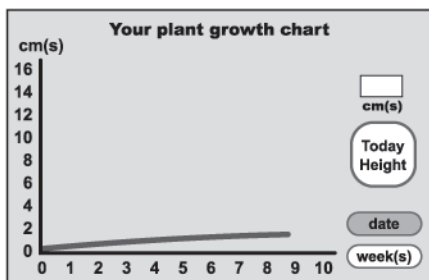


On which there is an entry box, for typing the favorite website. After typing the website click OK (the OK button is on the main interface). Simply double click on any input to launch the Web-page.

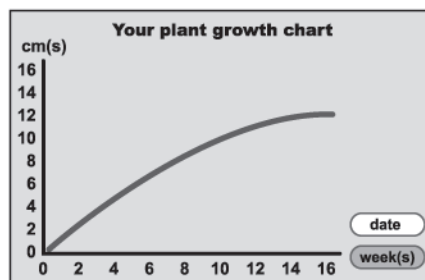


**3. Growth Chart** - this allows you to closely monitor the development of up to 20 plants. Clicking on this button calls up the plant folder.

Here is a list of all your plants and their development history. The name or species of your plant can be inserted in the "New plant" box, then double click on the OK button, to load the new name into the "All my plants" list.



Double clicking on your plant will call up the growth chart (and will also input this plant as the name of the USB Green House, which is a window on the main interface page). The growth chart allows you to monitor the development of your plant. Input the daily height of your plant in the measurement box and press the "today's height" button. This will update the growth chart, which shows the last 7 days of development.



There are buttons that allow you to select and review either the last 7 days, or the complete development history in weeks.

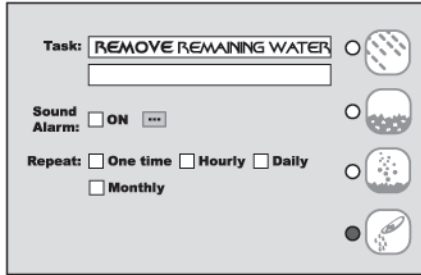


**4. Calendar** - this allows you to create a day-by-day schedule to ensure that you take care of your plant. The alarm feature will allow you to be reminded of various tasks, including, watering, soil maintenance, fertilize and remove excess water.

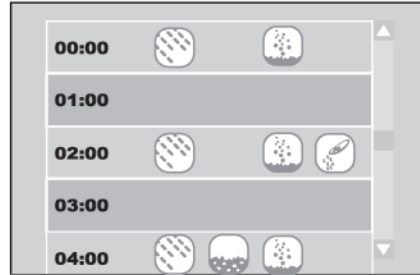
Click on the button calls up the calendar folder, which shows today's date highlighted.

Double click on the date and the data window will show the 24 hours of the day.

Click on the time that you wish to place a task, and the task folder will appear.

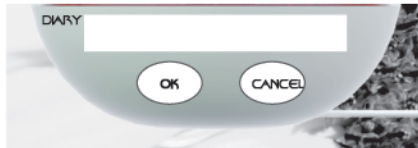


Within the task folder you can select a task you require, or a combination of tasks. When selected, you may attribute an alarm sound or not? And you also have a repeat option, which covers one time, hourly, daily or monthly. Input the tasks name within the insert box, press OK and the tasks will load to the hour folder.



Double "right click" on task icon to delete task. Pressing OK again will revert the data window to the Calendar folder. The alarm will sound and or flash up a Greenhouse shape icon near the task bar. Inside the icon will be the task icons representing the tasks required. To stop and remove the alarm, click the Greenhouse shape icon.

**5. Diary box** - this box allows you to make notes along the way.



Write your note and click OK and the information will be loaded into the exact time slot within your calendar for future reference. To recall the information, click on the calendar button, go to the date, click on the date, then review the hour's folder.

**Precautions:**

Before using this product, carefully read this manual and retain it for future reference.

**Safety:**

This product has been designed with the highest concern for safety. However, any electrical device, if used improperly, has the potential of causing fire, electrical shock or personal injury. To help ensure accident-free operation, follow these guidelines:

Stop use, unplug the USB cord, immediately if the device functions in an abnormal manner, produces unusual sounds or smells or becomes too hot to touch.

**Use and Handling**

1. Do not expose the Greenhouse to high temperatures, high humidity, or direct sunlight.
2. Do not expose the Greenhouse to dust, smoke or steam.
3. Do not allow small particles to get into the Greenhouse.
4. Do not place the Greenhouse on surfaces that are unstable or subject to vibration.
5. Do not throw or drop the Greenhouse or subject it to physical shock.
6. The Greenhouse contains sensors and should be handled with care.

**Cleaning:**

1. For safety reasons, unplug the USB cord from your PC before cleaning.
2. Wipe gently with a damp cloth, and then dry the surface.
3. Do not use solvents or other chemicals to clean the exterior of Greenhouse.
4. It is recommended to change the 2 times a week. Make sure the USB Cable is disconnected and the unit is away from you computer or other electrical equipment. Remove the tray at the back of your Greenhouse and empty the excess water. Replace the tray securely back into the unit. Wipe any excess water or moisture from the greenhouse

**General:**

1. Should the Greenhouse perform unexpected function, unplug the unit and then reset the interface.
2. As your plant grows you may also adjust the light to grow with it.

**Note:** See [www.dreamcheeky.com](http://www.dreamcheeky.com) for full online support link and trouble-shooting.